

# VMware ESXi VPS

## WebDocuments 1.0 Setup Guide for IceWarp Server 12.0.X

With this method, you will run WebDocuments on virtual machine preconfigured by us. If you prefer to run WebDocuments on your own Virtual Machine, check also option APT repository (VM with Debian8 is required).

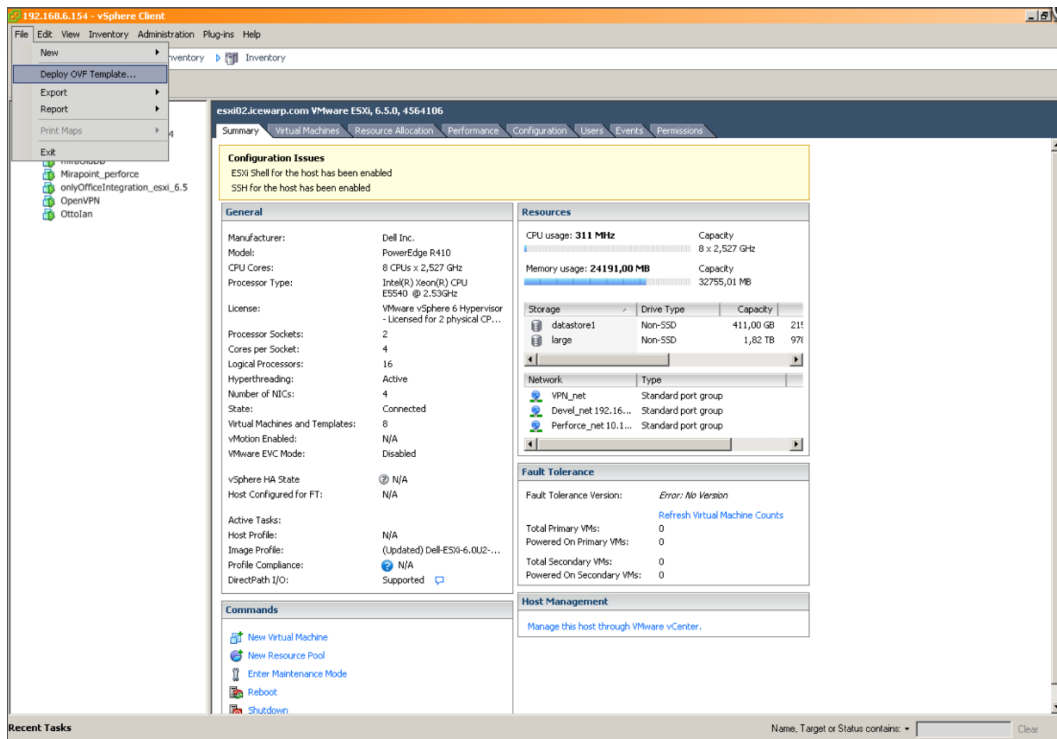
### Step 1 - Import VM

- Download image zip archive with version for ESX 5.5/6.5 and extract it (VM will not run from the extracted folder)

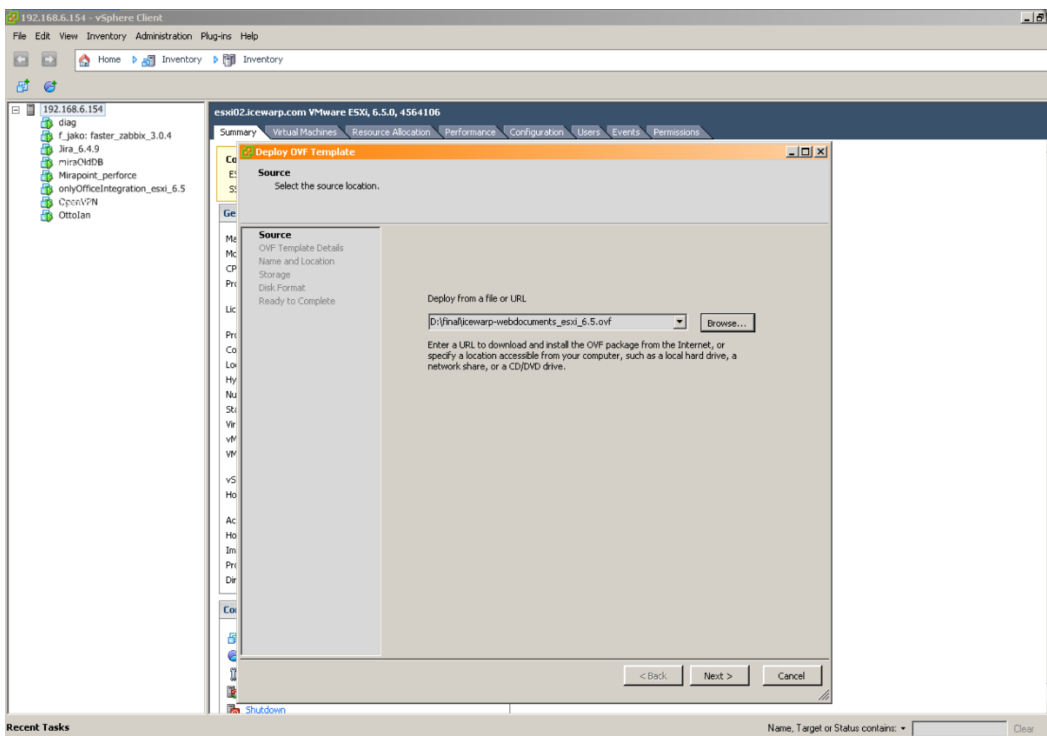
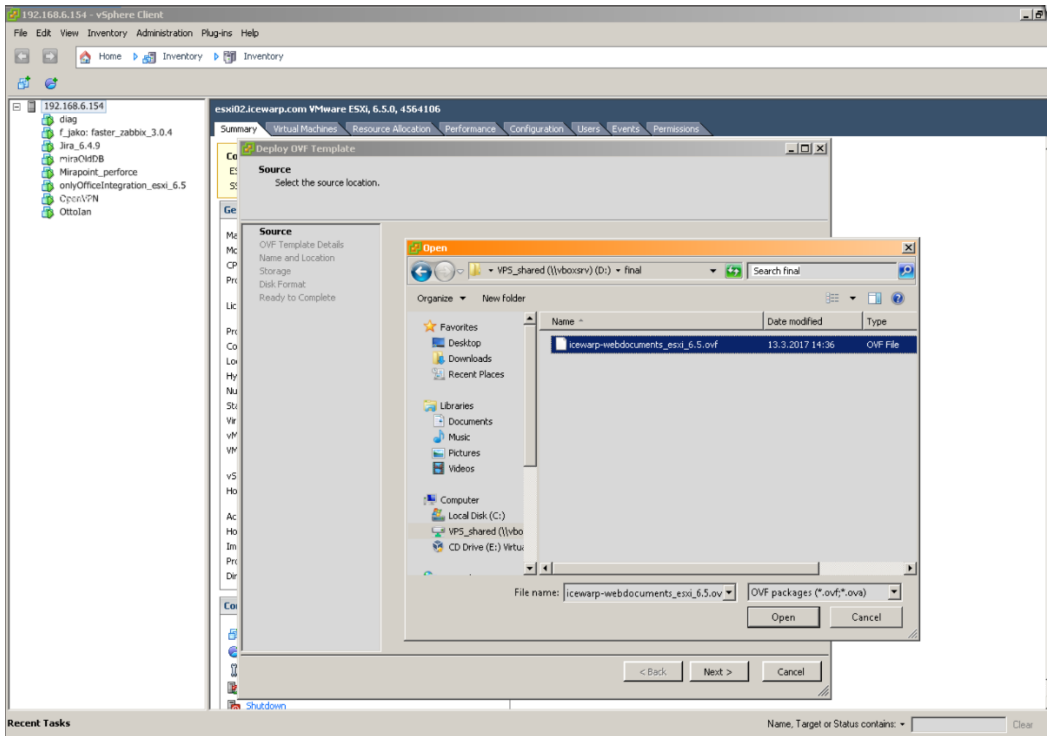
Version for ESX 5.5 – [Download](#)

Version for ESX 6.5 – [Download](#)

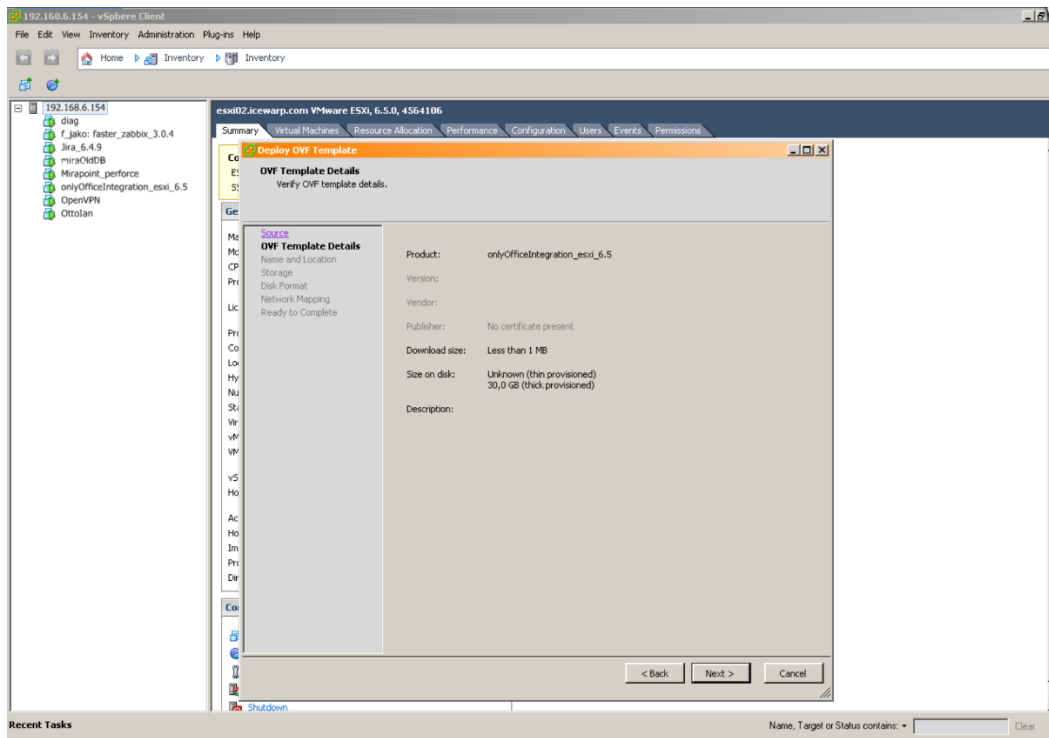
- Open vSphere client (or other manager like Workstation) and deploy OVF Template



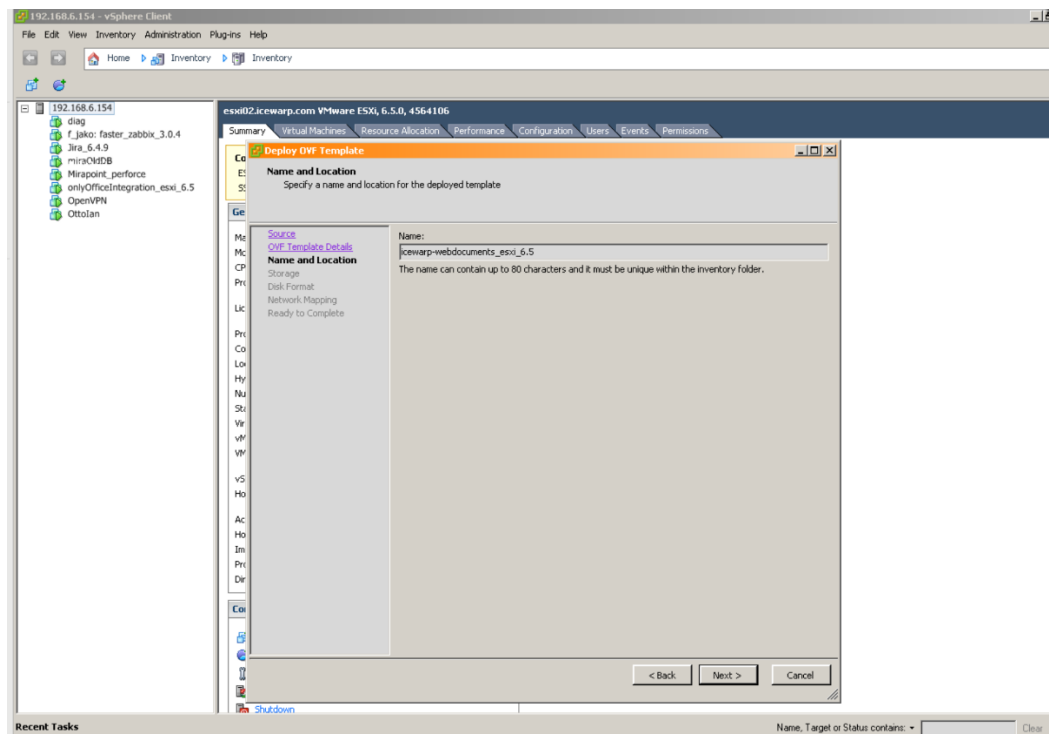
c) Open OVF Template file and click next



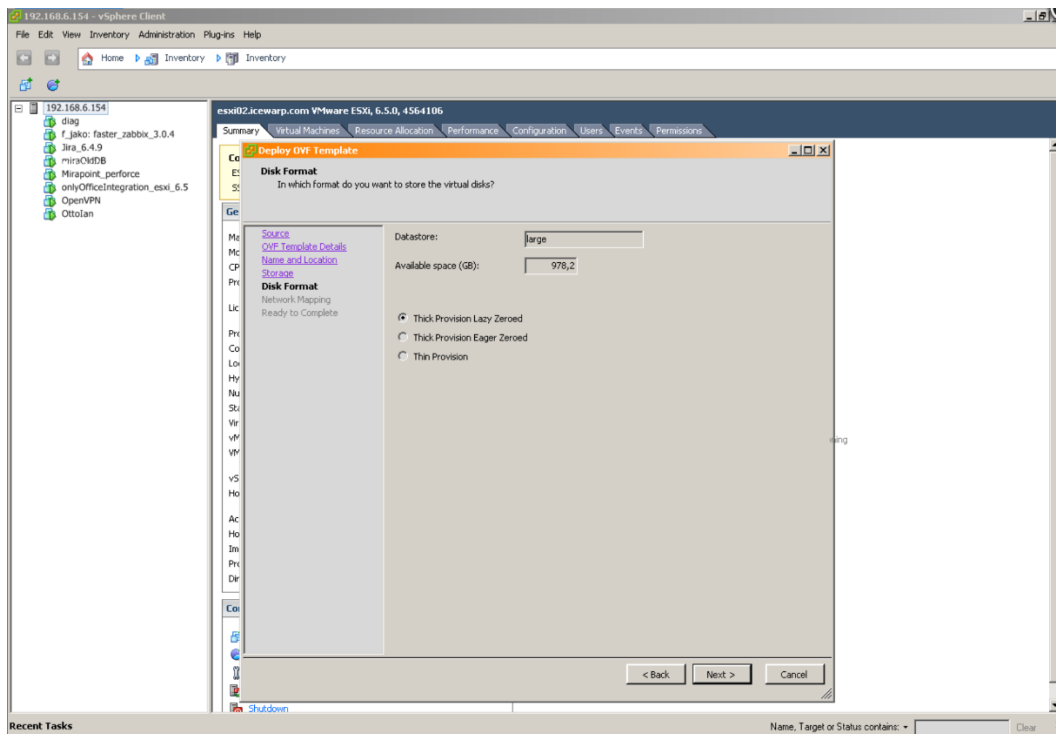
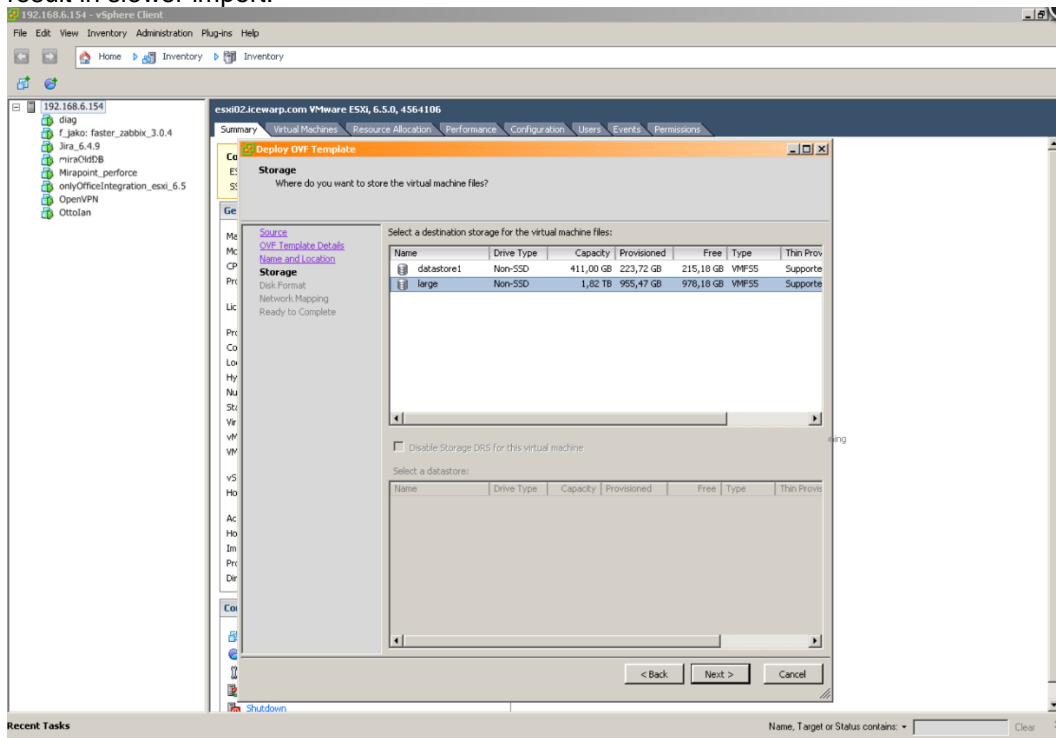
d) Review template details, click next

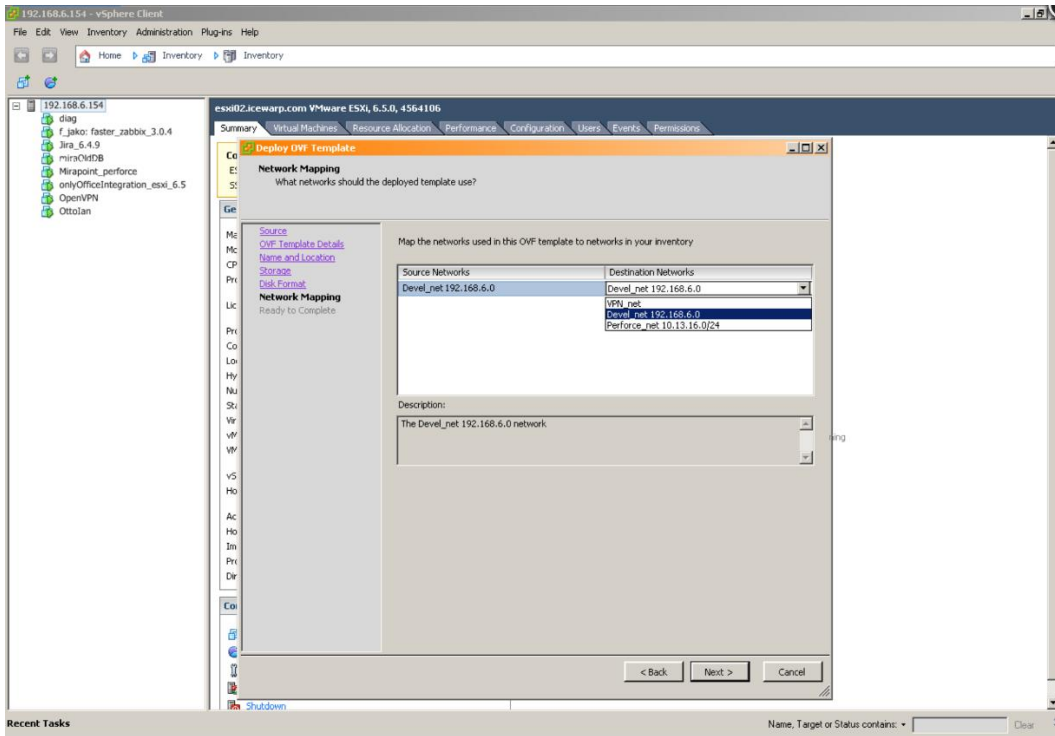


e) Fill in a name for the VM (the default value is just fine), click next



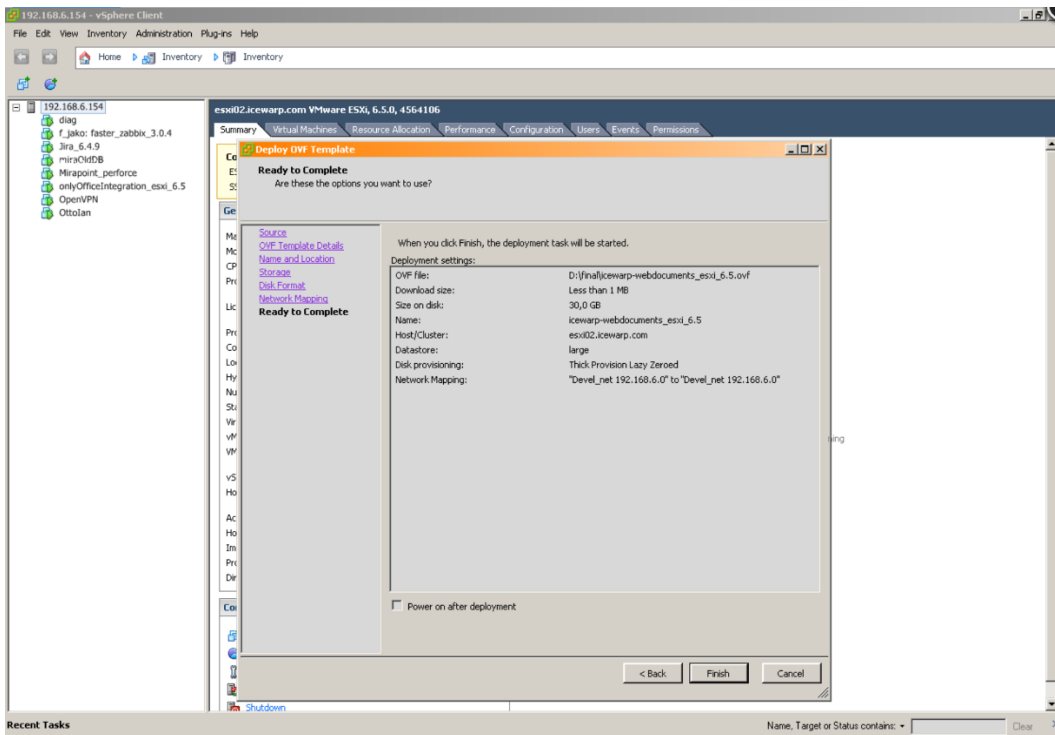
- f) Select datastore and disc type - we recommend default setting (lazy zeroed). Eager zeroed will result in slower import.



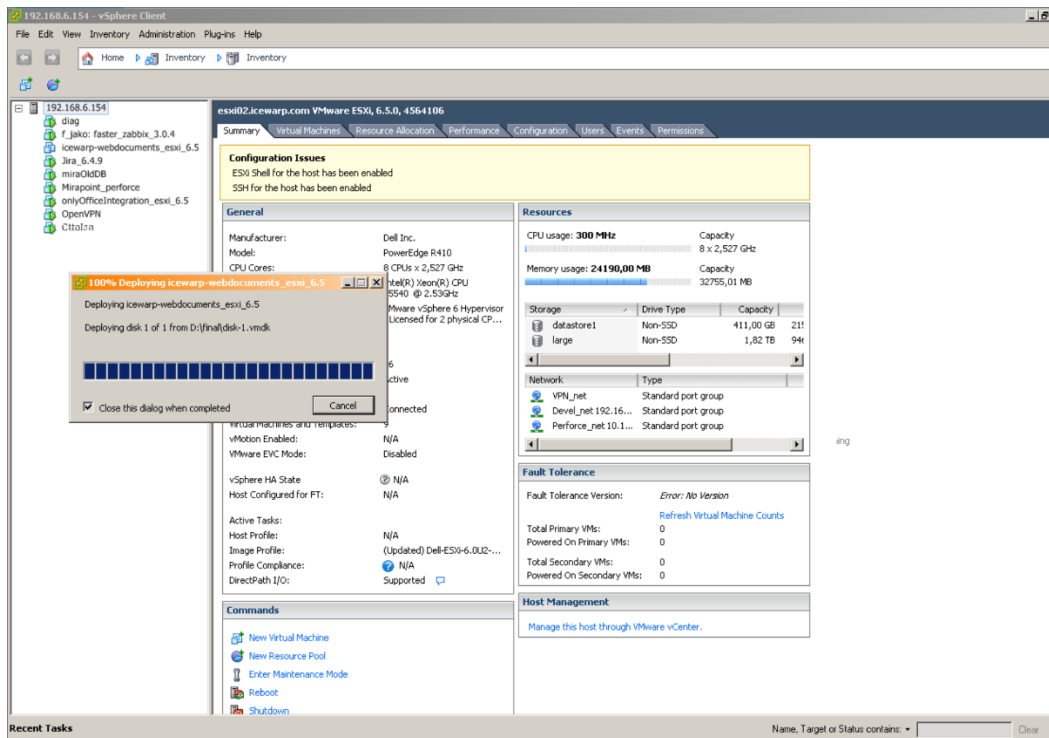
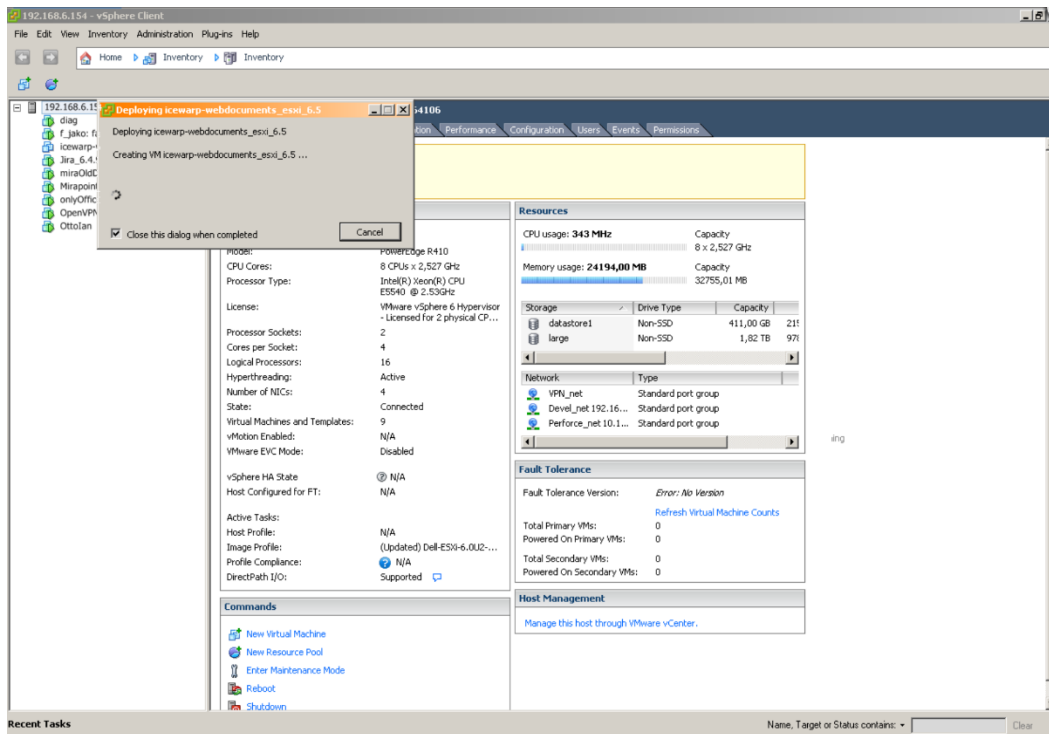


Click next learn more about disk types at: <https://communities.vmware.com/message/2199576>

g) Revise settings and check „Power on after deployment“, click finish



h) Click close after deployment finish

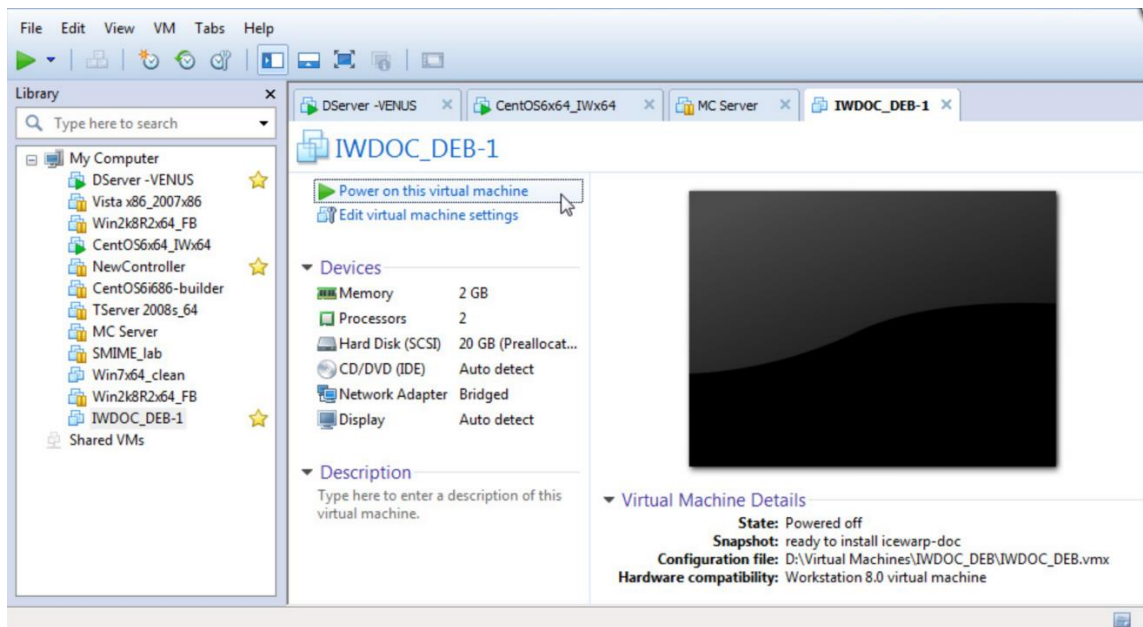


- i) Manage virtual machine automatic start through VMware Workstation or vSphere WebClient - right-click hypervisor in the list in left pane and pick "Manage AutoStart VMs..."
- j) Tick the box on the left from imported VM in the Configure AutoStart dialog.

There is no need to change anything in the image if DHCP is used. Just configure your DHCP server to assign the same IP address each time (IP reservation according to MAC).

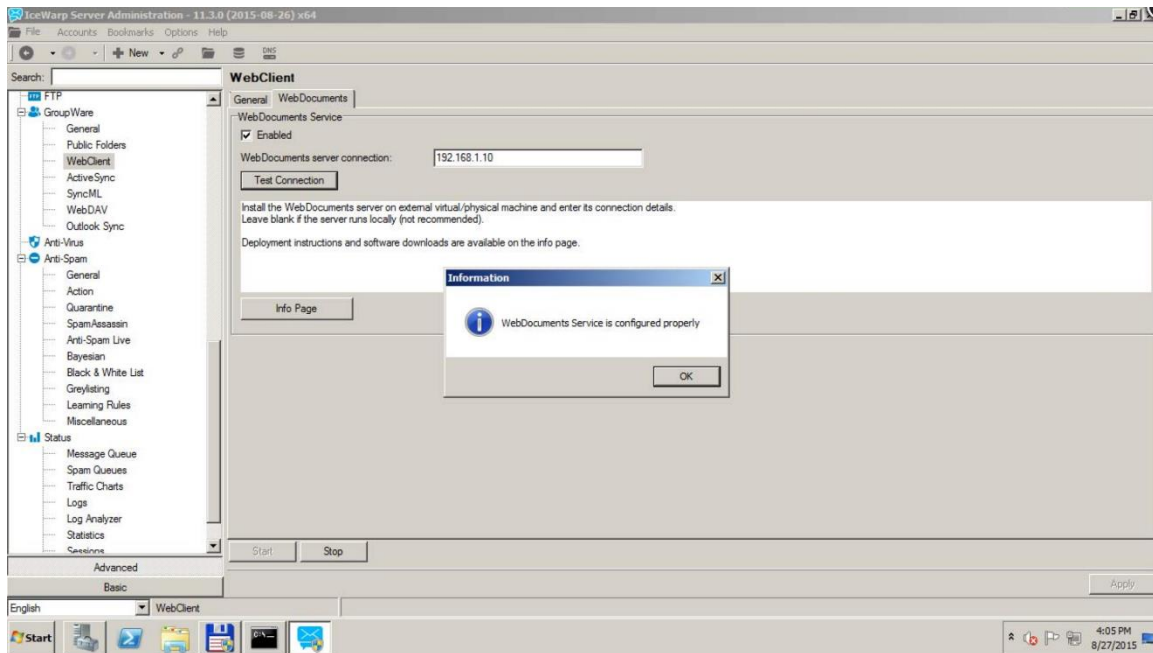
## Step 2 – Start the Virtual Machine

Power on (if not already done during import) the Virtual Machine by selecting Start from VM Power menu or its dashboard.



## Step 3 – Configure IceWarp server

- Obtain IP address assigned to installed machine. It should be visible on terminal (or SSH login screen) under the IceWarp logo. Open IceWarp Administration Console and insert IP address of iwds host into "WebDocuments server connection" input located at GroupWare -> WebClient -> WebDocuments tab
- Enable "WebDocuments Service"
- Check that the configuration is correct by clicking "Test Connection" button (image iwdoc-iwserver-setup.jpg). "Test Connection" check will also configure iwds service for interoperation with IceWarp Server.
- Save configuration changes by clicking on Apply button



Review TeamChat URL settings located at System -> Smartdiscover tab. URL must be reachable from iwds host. Also, IceWarp Server must be able to send out tcp packets to destination ports 8081, 80 or 443 on iwds host.