

Hyper-V

WebDocuments 1.0 Setup Guide for IceWarp Server 12.0.X

This method is the easiest way for you to setup WebDocuments on Windows. With this method, you will run WebDocuments on a virtual machine preconfigured by IceWarp. If you prefer to run WebDocuments on your own Virtual Machine, check also option APT repository (VM with Debian8 is required).

Step 1 - Import VM

To enable Hyper-V role on your Windows Server OS follow: https://technet.microsoft.com/en-us/library/hh846766.aspx#BKMK_SERVER

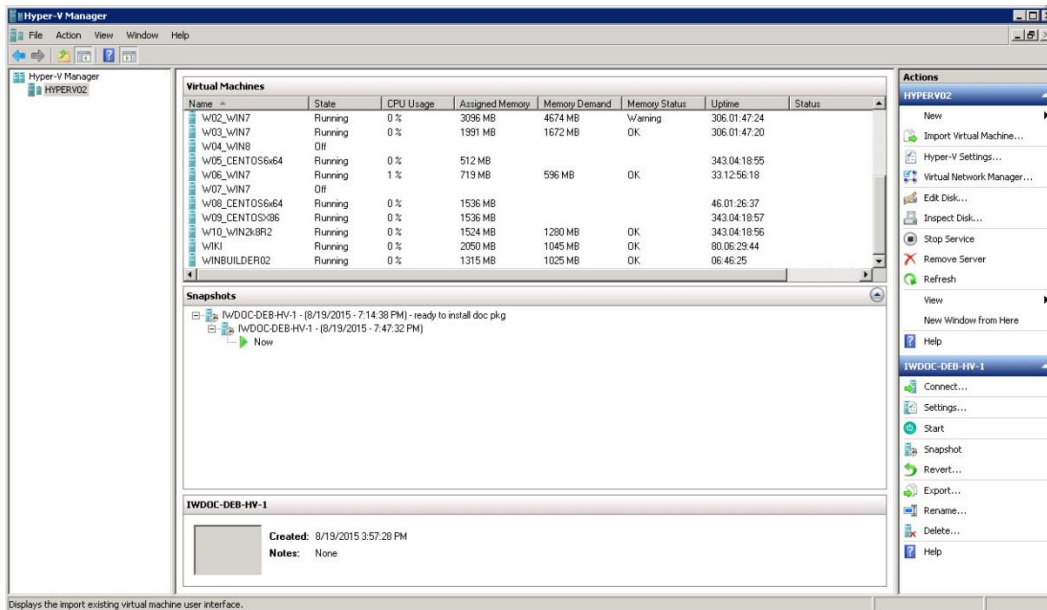
The process is quite similar on all relevant Windows Server versions.

- a) Download image zip archive and extract it (VM will run in the extracted folder!)

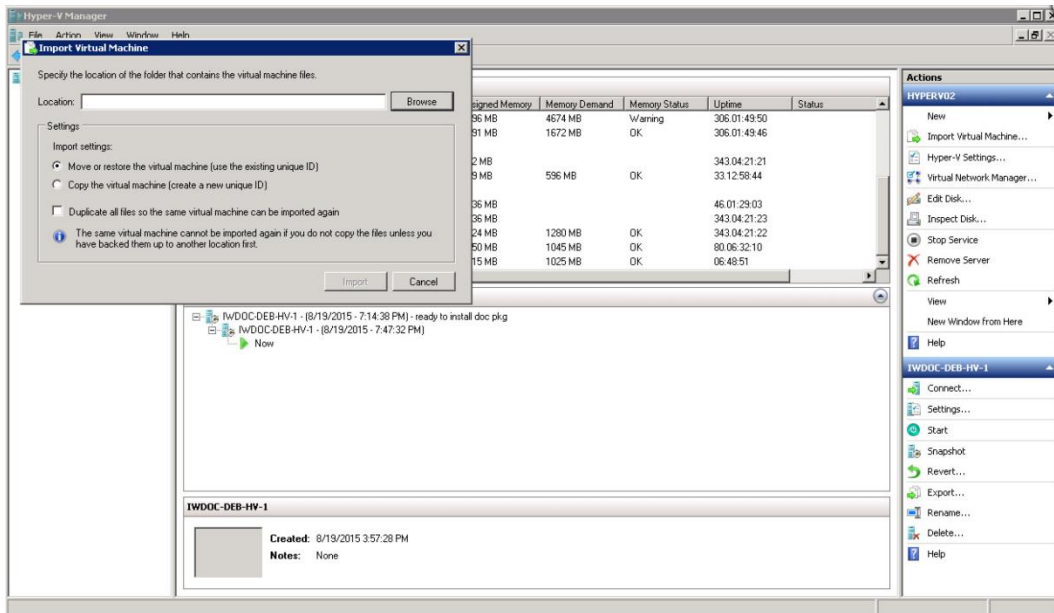
Win2k8 – Win2012 – [Download](#)

Win2012 – 2012R2+ – [Download](#)

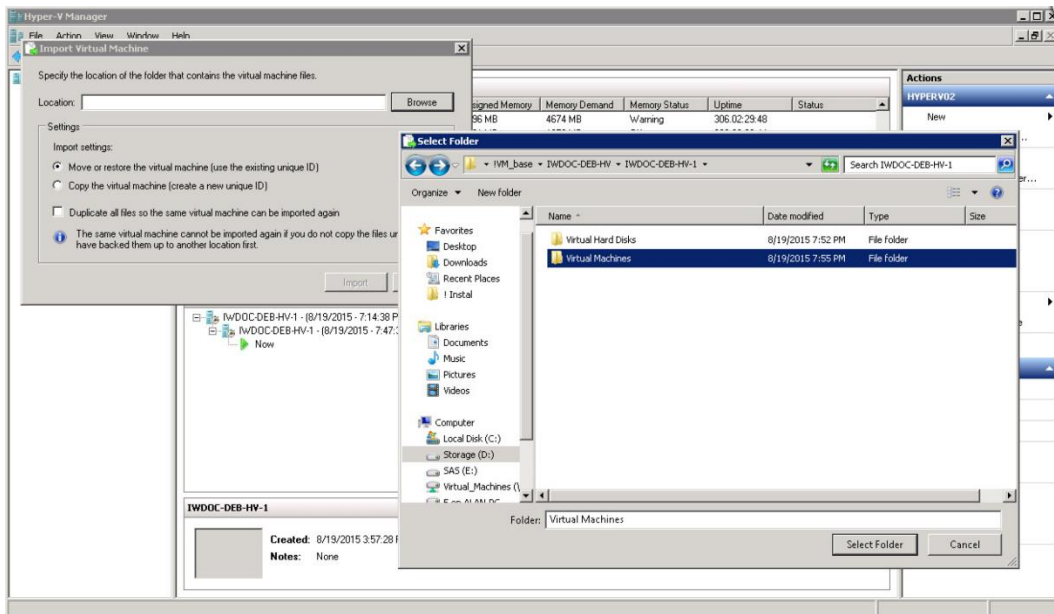
- b) Open Hyper-V Manager (located in Administrative Tools or Server Manager)



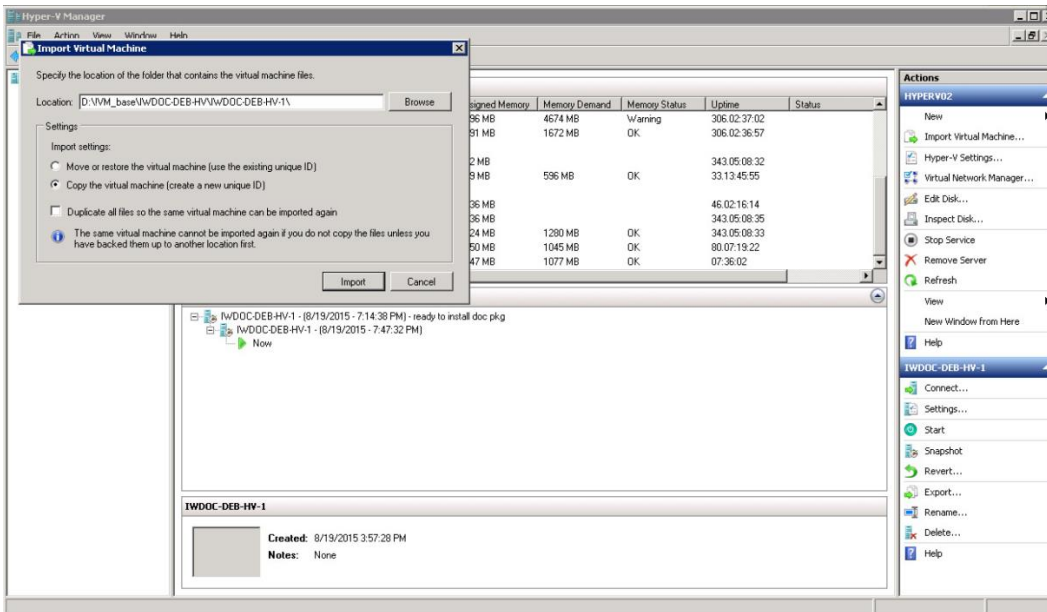
c) Click "Import Virtual Machine..." option located on top of Actions pane (on the left)



d) Browse to the location where you extracted VM image and select the root folder containing VM files.



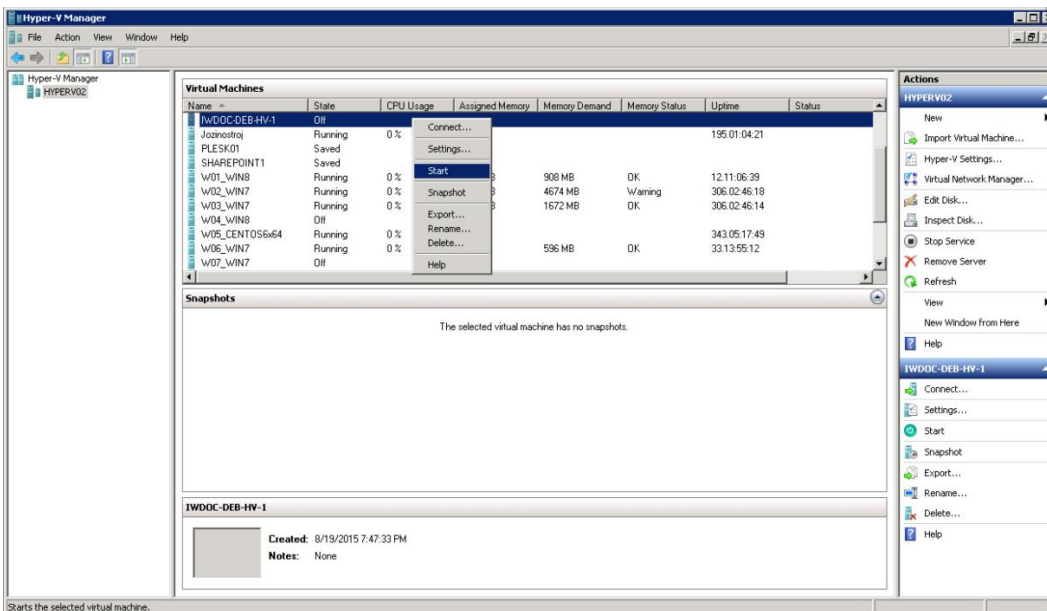
- e) Choose import settings, both options are ok, but rather go for "Copy the virtual machine (create new unique ID)" option. Press "Import"



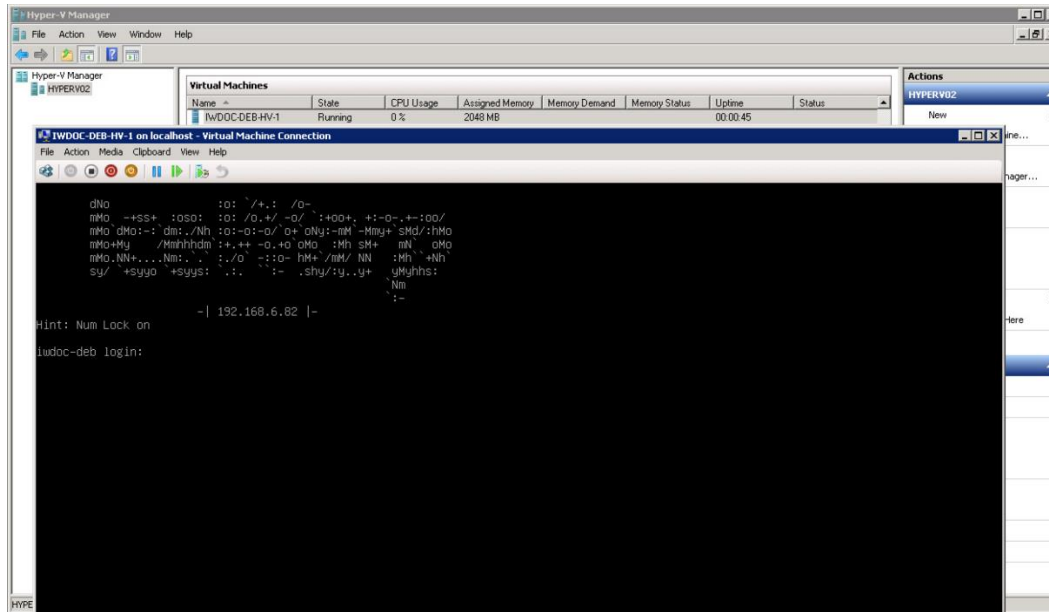
The most current version of IceWarp Server is available for Windows and the most popular Linux systems.

Step 2 – Start the Virtual Machine

- a) Importing will add new virtual machine to list of all guest machines. You can start it either by right clicking the machine or by left-clicking "Start" item in Actions pane. Start progress is displayed in Status column in Hyper-V Manager.

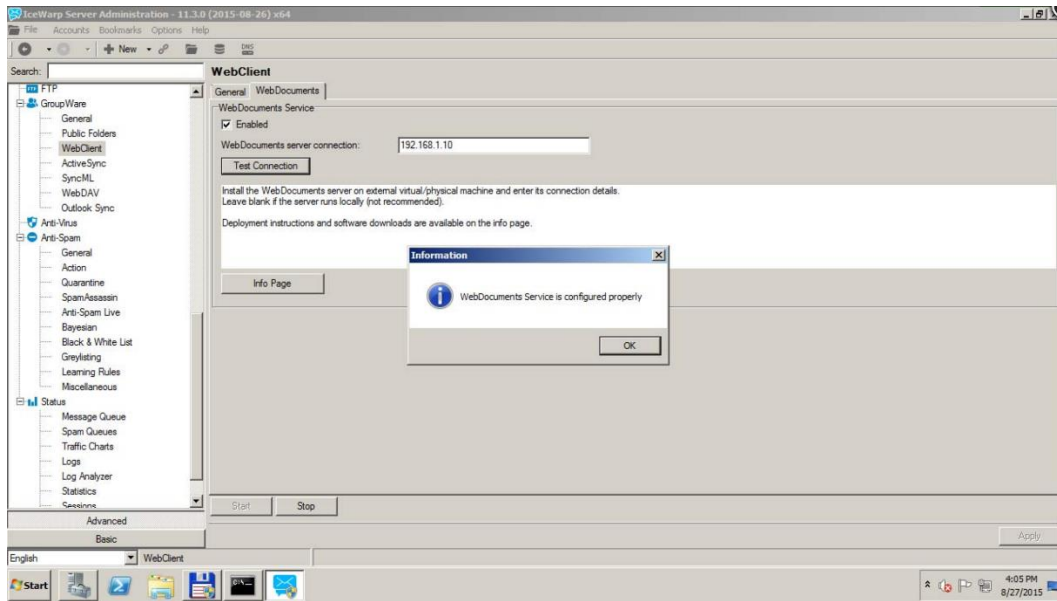


- b) Double-clicking the machine in the list will bring up VNC console, booted VM will display IceWarp logo together with machine IP.



Step 3 – Configure IceWarp server

- Obtain IP address assigned to installed machine. It should be visible on terminal (or SSH login screen) under the IceWarp logo. Open IceWarp Administration Console and insert IP address of iwds host into "WebDocuments server connection" input located at GroupWare -> WebClient -> WebDocuments tab
- Enable "WebDocuments Service"
- Check that the configuration is correct by clicking "Test Connection" button (image iwdoc-iwserver-setup.jpg). "Test Connection" check will also configure iwds service for interoperation with IceWarp Server.
- Save configuration changes by clicking on Apply button



Review TeamChat URL settings located at System -> Smartdiscover tab. URL must be reachable from iwds host. Also, IceWarp Server must be able to send out tcp packets to destination ports 8081, 80 or 443 on iwds host.