

---

IceWarp Unified Communications

# IceWarp Notifier Guide

Version 12.0

**IceWarp**<sup>®</sup>



# Contents

- IceWarp Notifier User Guide..... 4
- Installation ..... 5
- Settings ..... 9
- Notifications..... 10
- Pop-up menu ..... 10



## IceWarp Notifier User Guide

IceWarp Notifier is a WebClient integration and new email notification utility, for Windows 7 or newer.

The main purpose is to allow integration of IceWarp WebClient as the default e-mail client of Windows for handling **mailto:** hyperlinks, or as a system tray shortcut to message composer. Users no longer need to launch their browsers, navigate to the WebClient addresses, log in and click **New Message** and then paste e-mail addresses through clipboard – Notifier makes it possible with just a single click.

With Notifier installed, clicking a **mailto:** link will open WebClient message composer and supply the subject, recipient's email address or SMS number.

Notifier also informs on new email instantly as items arrive, displaying a notification bubble with e-mail preview and/or playing a custom sound, and shows unread message count when you hover the mouse over its icon.

Automatic features make it easily accessible for users:

- Easy installation through installer wizard
- SmartDiscover support (zero configuration, just type username and password)
- Automatic timezone adjustment to system timezone
- Locale AutoDetect (language selected automatically based on Windows local settings)
- Auto SSL (whenever available)
- Auto start on system startup

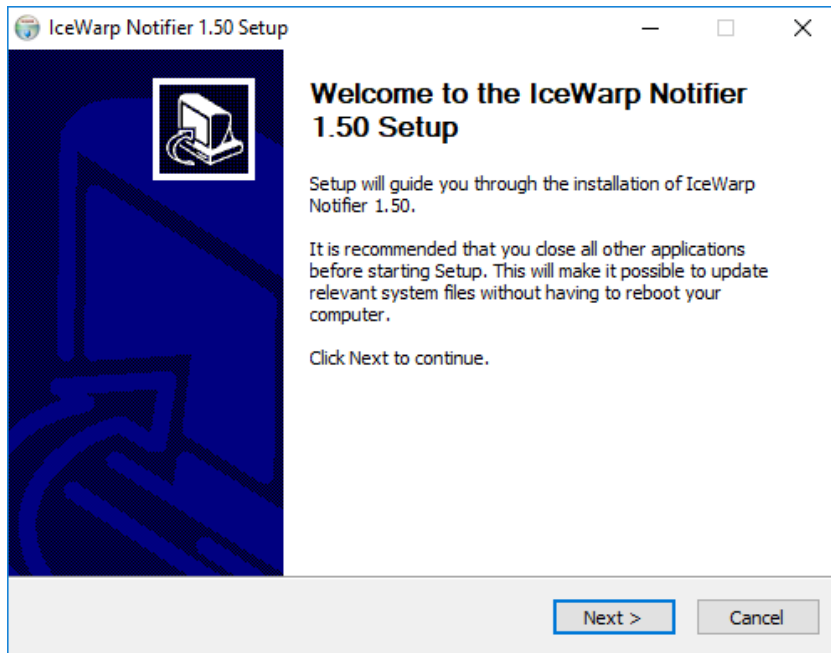
Other features include:

- Mailto: and default mail client handling
- IMAP IDLE – instant e-mail notification and continuous item display
- CRAM-MD5 authentication
- Systray icon unread message indication
- Fading window with e-mail preview
- Browsing in emails using key arrows, **Home** and **End**
- Custom or Windows sound new e-mail notification
- Opens the default browser or another specified in **Settings**
- Unicode or regional charset support
- Localization support (various language translations available)
- Uses INTERNALDATE (no notifications on forged **Date:** header)
- Command line parameters, see /help for information
- --help, --runmail, --mailto, --register and --unregister parameters

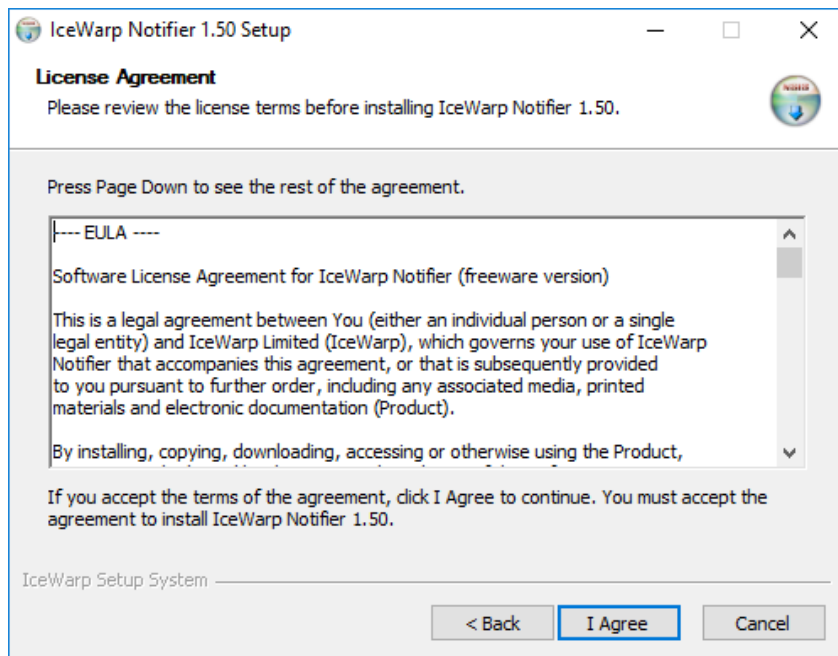
## Installation

1. Double-click the installation file – **notifier-setup.exe** – to run the setup wizard.

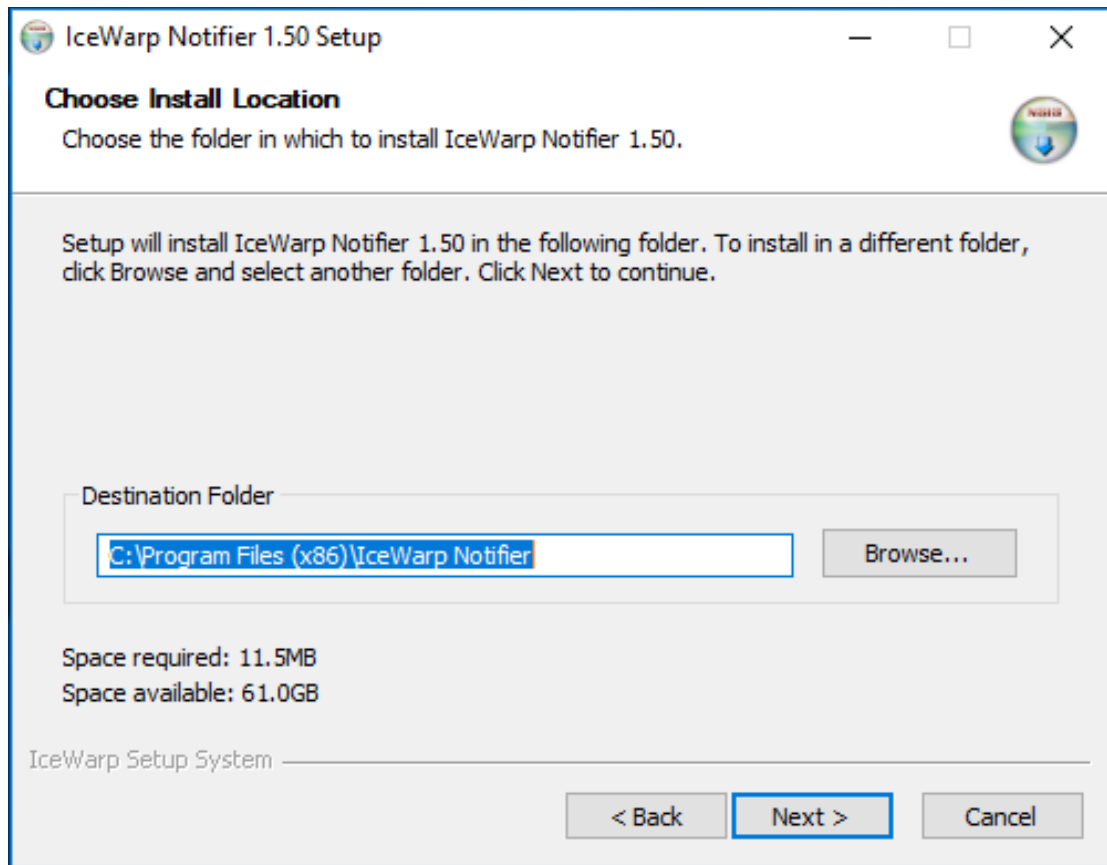
On the Welcome page, click **Next**.



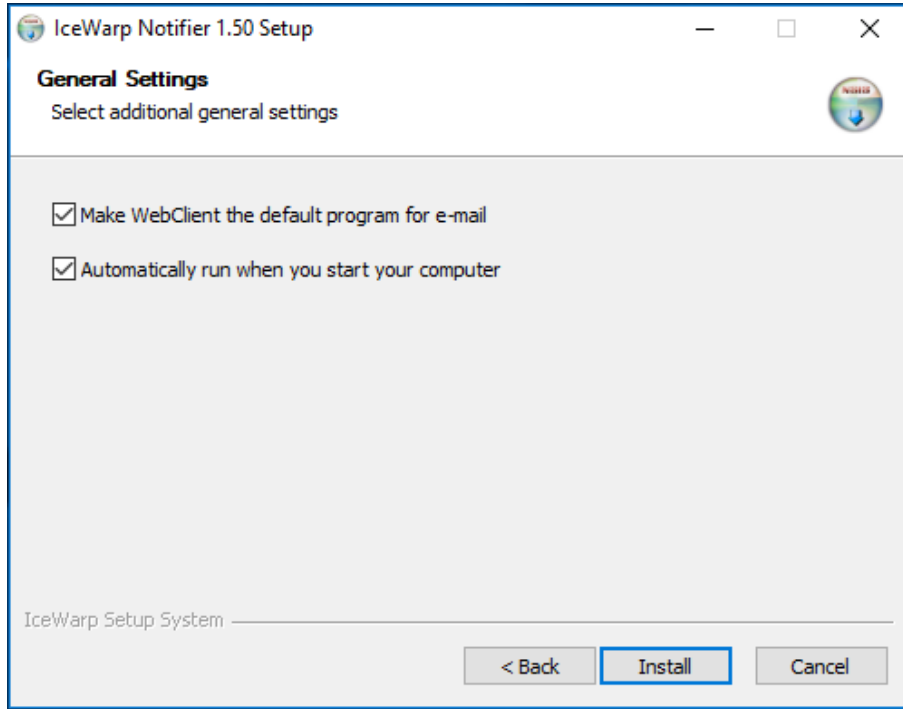
2. On the License Agreement page, review the agreement and click the I Agree button.



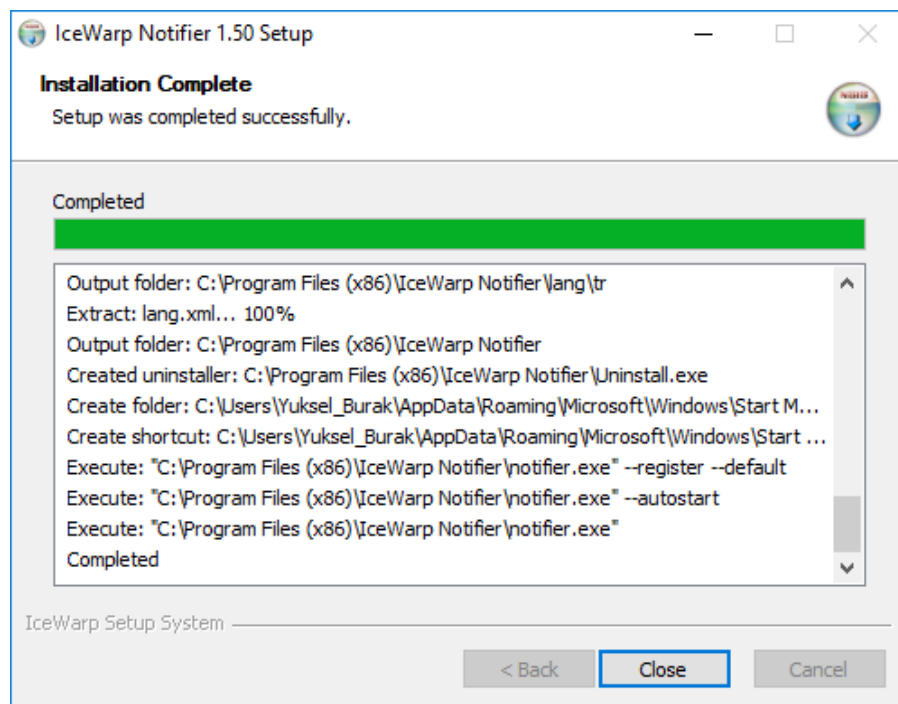
3. On the **Choose Install Location** page, either select the **Destination Folder** using the **Browse** button and click **Next** or just confirm the suggested location by clicking **Next**.



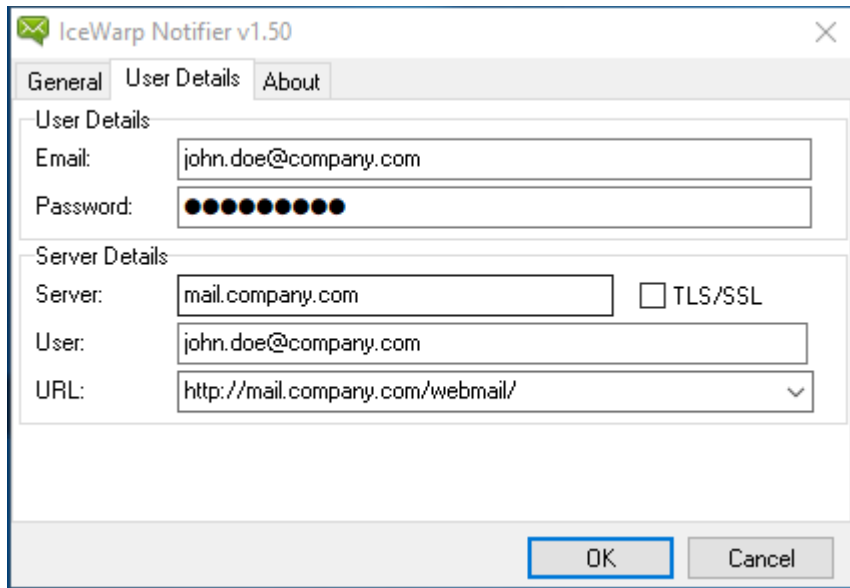
- On the **General Settings** page, tick the **Make WebClient the default program for e-mail** box if you want to use WebClient as your default email application, tick the **Automatically run when you start your computer** box if you want to have Notifier launched on the computer start, click the **Install** button.



- On the **Installation Complete** page, review installation information and click the **Close** button.



6. After installation complete, configuration window will be appeared:
- On the **User Details** tab, fill in your **Email** address and **Password** to your email account.
  - Notifier will now try to automatically configure the server using the SmartDiscover feature, if it has been enabled by the server administrator. If you do not see a notification window with e-mails from your **Inbox**, you need to configure Notifier manually.



Field	Details
Email	Enter the email address of the user. In this example john.doe@company.com
Password	Enter the password.
Server	Type the server hostname you received from your administrator. Click TLS/SSL checkbox, if you want to establish secured connection with IceWarp Server the administrator aliases for the email address specified in the E-mail field.
User	Enter the email address of the user. In this example john.doe@company.com
URL	Provide the correct web address where you usually access WebClient.

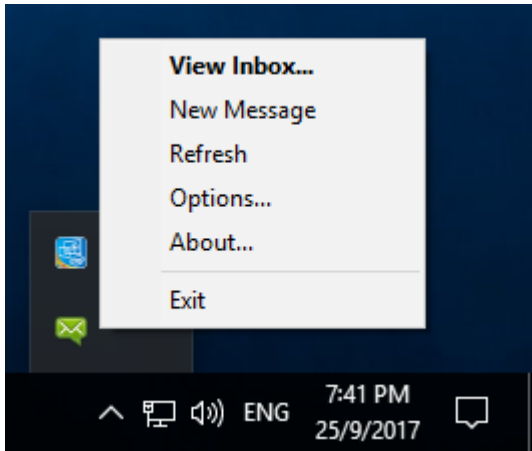
- Click **OK** to finish settings up Icewarp Notifier and save the changes.



## Settings

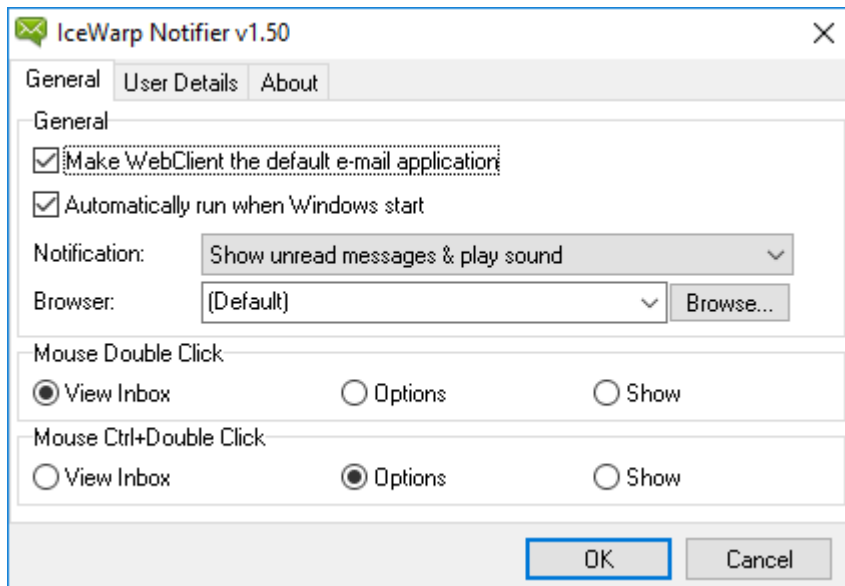
To configure Icewarp Notifier, follow these steps:

1. On the right side of the computer **task bar**, right-click the icon shown below and select the **Options** item:



For more details about the pop-up menu shown above, refer to the Pop-up Menu section.

2. On the General tab, define your IceWarp Notifier preferences:



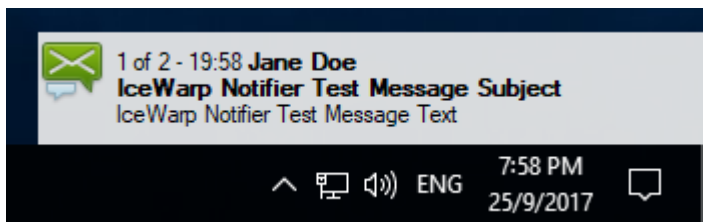
Field	Details
Make WebClient the default program for email	Tick the box if you want to set WebClient as the default email client in Windows.
Automatically run when you start your computer	Tick the box if you want the system to launch Notifier automatically after Windows startup.
Notification	Select how/if you want to be notified when a new email message arrives: <ul style="list-style-type: none"> <li>▪ Show unread messages &amp; play sound</li> <li>▪ Show unread messages</li> <li>▪ None</li> </ul>
Browser	Select the default browser for WebClient from the list or click the <b>Browse</b> button to use the <b>Browse for file</b> dialog to select your favorite browser.

Other settings are optional.

3. Click OK to finish setting up IceWarp Notifier and save the changes.

## Notifications

When a new email message arrives, a notification similar to this one is shown:

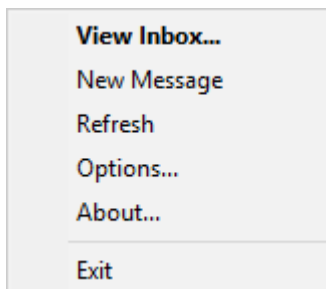


Clicking this notification frame opens a window with the incoming message directly in WebClient.

You can use arrow keys, Home and End keys to browse through e-mails in your Inbox within the notification frame.

## Pop-up menu

To reveal this menu, right-click the Notifier task-bar icon as illustrated in the Settings chapter – on the first image with an arrow.



Field	Details
View Inbox	<p>Click the item to open IceWarp WebClient in your browser and view Inbox.</p> <p><b>Note:</b> You have to have set the <b>Auto login</b> option in the <b>Remember</b> field of the WebClient login page unless you want to always log in.</p>
New Message	<p>Click the item to open WebClient with a composer window ready to write a new email message.</p> <p><b>Note:</b> You have to have set the <b>Auto login</b> option in the <b>Remember</b> field of the WebClient login page unless you want to always log in.</p>
Refresh	Click the item if you want to review notifications of all unread email messages.
Options	Refer to the Settings section for detailed description of this option.
About	Click the item to reveal the <b>About</b> tab with information about the currently installed version and copyright notice.
Exit	Click the item to shut down the Notifier.