
IceWarp Unified Communications

IceWarp Notifier User Guide

Version 11.4



Contents

IceWarp Notifier User Guide	1
Installation.....	2
Settings.....	7
Notifications	9
Pop-up Menu	10

CHAPTER 1

IceWarp Notifier User Guide

IceWarp Notifier is a WebClient integration and new email notification utility, for Windows 98, 2000, XP, Vista and W7.

The main purpose is to allow integration of IceWarp WebClient as the default Windows e-mail client for handling **mailto:** hyperlinks, or as a system tray shortcut to message composer. No longer users need to launch their browsers, navigate to the WebClient addresses, log in and click **New Message** and then paste e-mail addresses through clipboard – Notifier makes it possible with just a single click.

With Notifier installed, clicking a **mailto:** link will open WebClient message composer and supply the subject, recipient's email address or SMS number.

Notifier also informs on new email instantly as items arrive, displaying a notification bubble with e-mail preview and/or playing a custom sound, and shows unread message count when you hover the mouse over its icon.

Automatic features make it easily accessible for users:

- Easy installation through installer wizard
- SmartDiscover support (zero configuration, just type username and password)
- Automatic timezone adjustment to system timezone
- Locale AutoDetect (language selected automatically based on Windows locale settings)
- Auto SSL (whenever available)
- Auto start on system startup

Other features include:

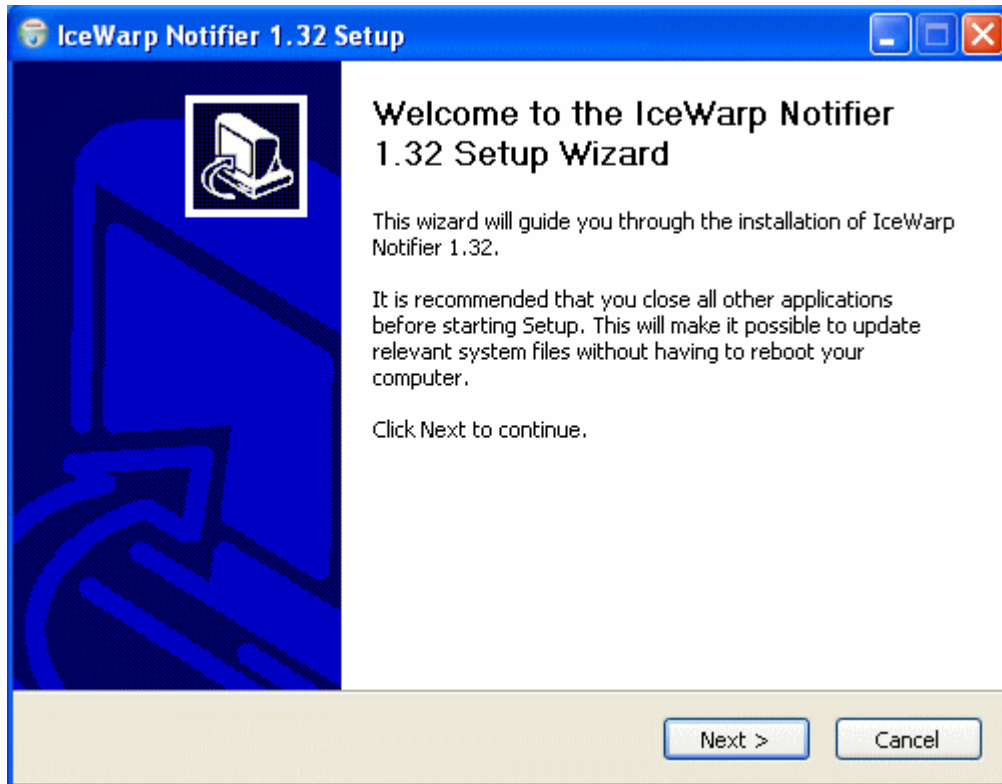
- Mailto: and default mail client handling
- IMAP IDLE – instant e-mail notification and continuous item display
- CRAM-MD5 authentication
- Systray icon unread message indication
- Fading window with e-mail preview
- Browsing in emails using key arrows, **Home** and **End**
- Custom or Windows sound new e-mail notification
- Opens the default browser or another specified in **Settings**
- Unicode or regional charset support
- Localization support (various language translations available)
- Uses INTERNALDATE (no notifications on forged **Date:** header)
- Command line parameters, see /help for information
- --help, --runmail, --mailto, --register and --unregister parameters

Installation

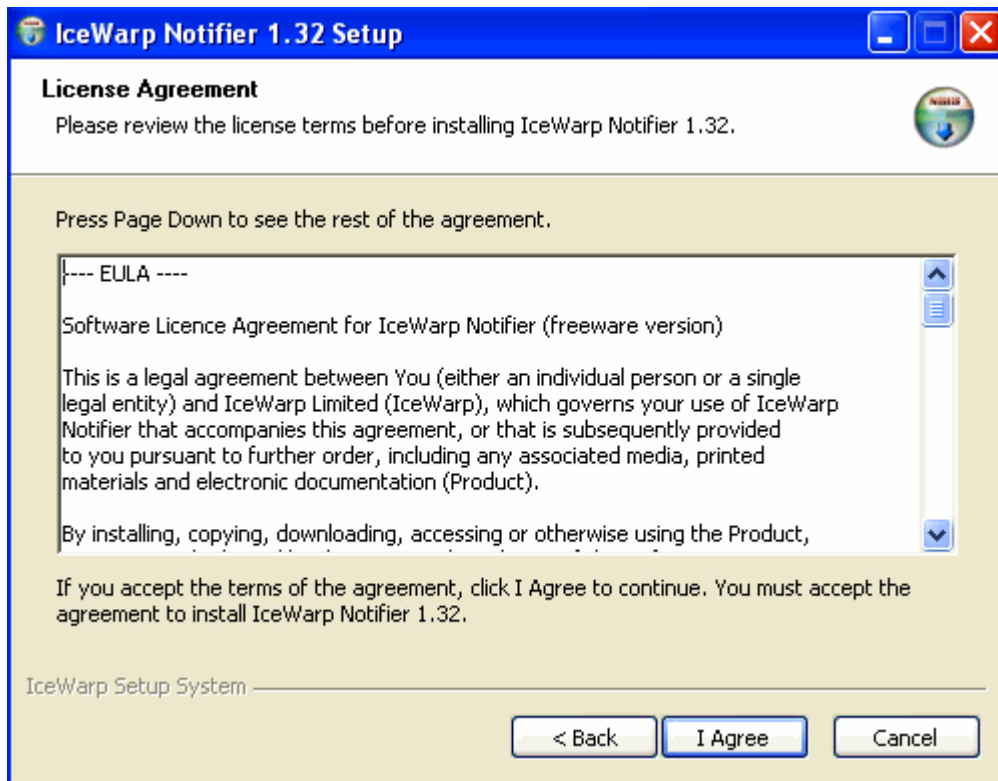
To install IceWarp Notifier, do the following:

1. Double-click the installation file – **notifier-setup.exe** – to run the setup wizard.

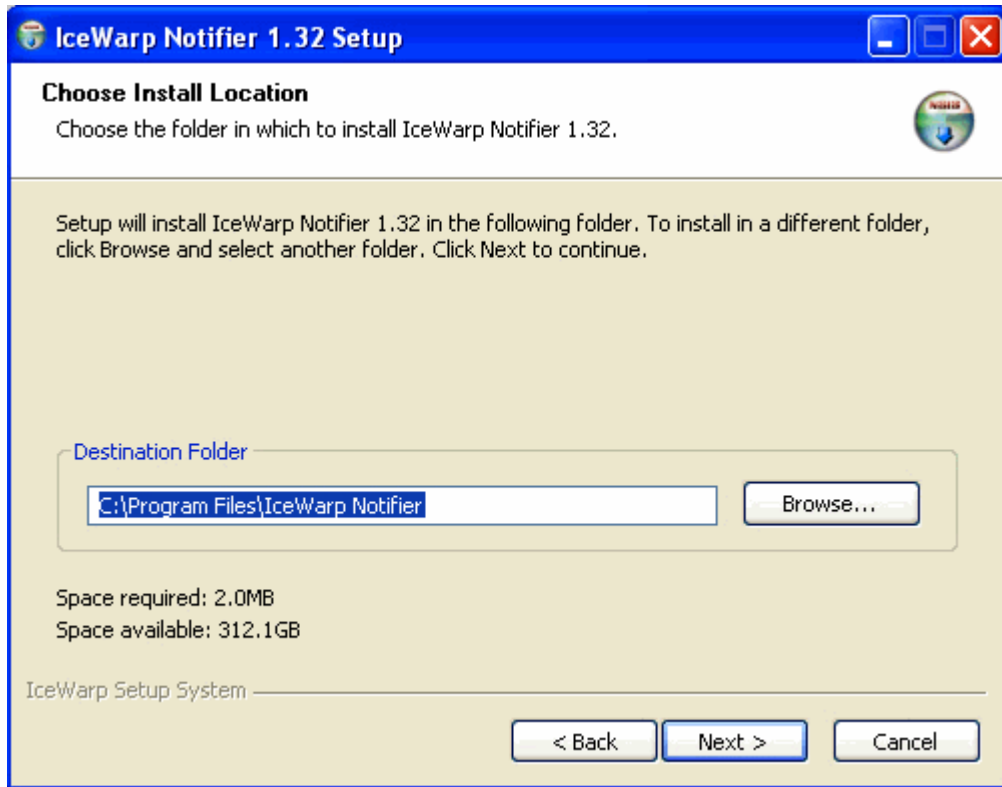
On the **Welcome** page, click **Next**.



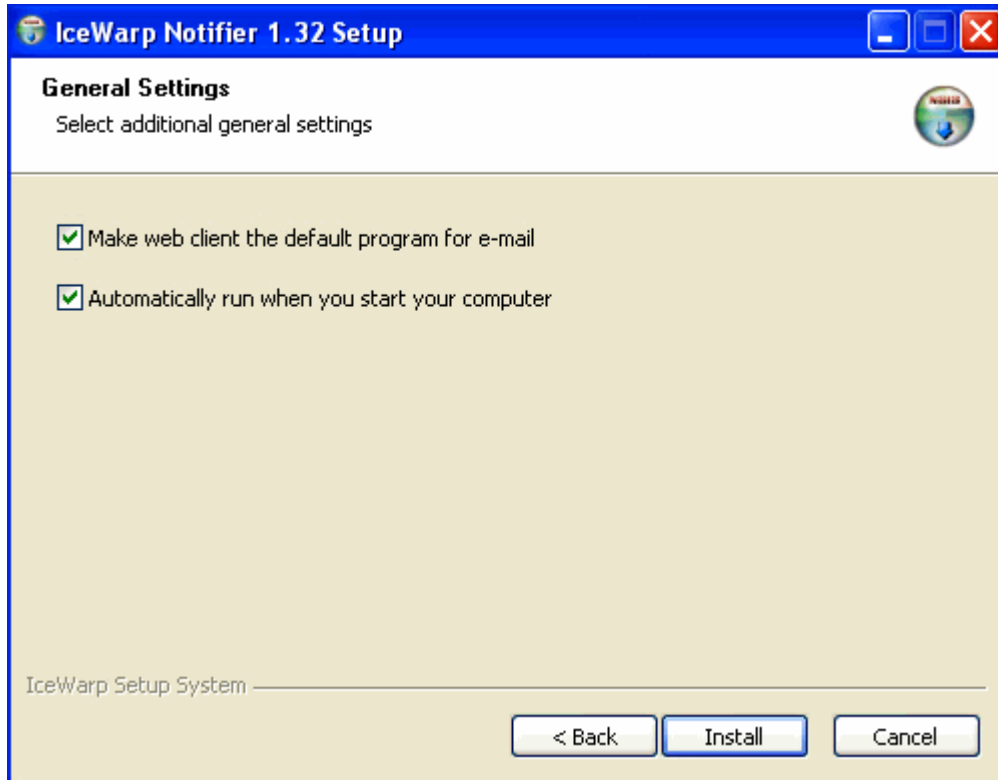
2. On the **License Agreement** page, review the agreement and click the **I Agree** button.



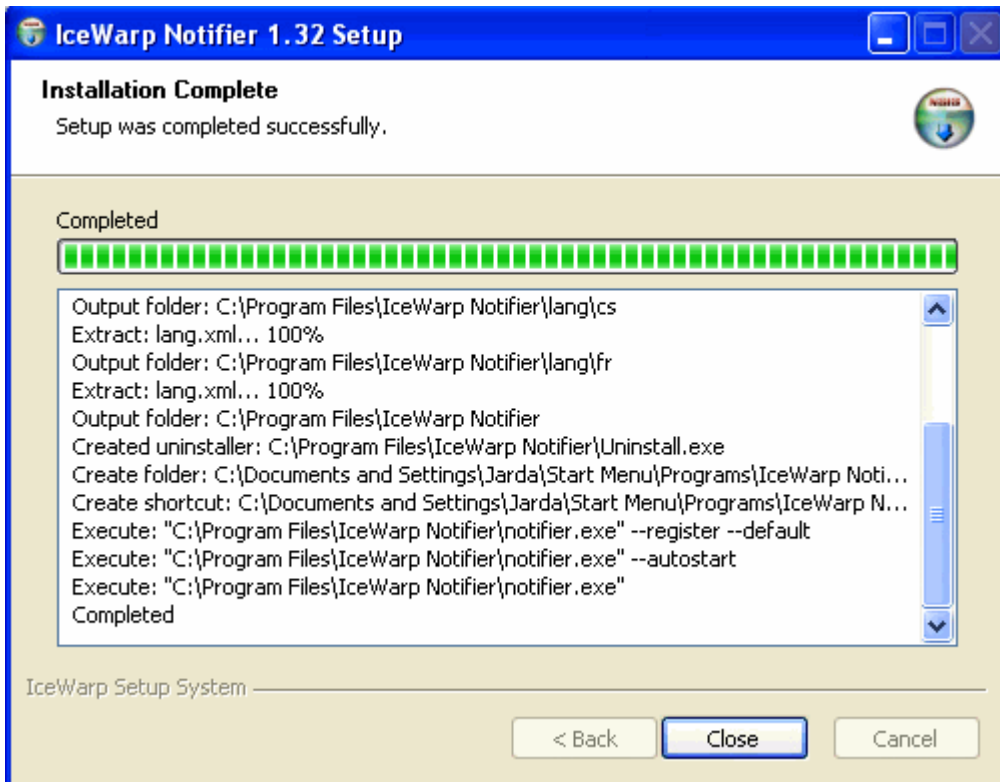
3. On the **Choose Install Location** page, either select the **Destination Folder** using the **Browse** button and click **Next** or just confirm the suggested location by clicking **Next**.



4. On the **General Settings** page, tick the **Make WebClient the default program for e-mail** box if you want to use WebClient as your default email application, tick the **Automatically run when you start your computer** box if you want to have Notifier launched on the computer start, click the **Install** button.



5. On the **Installation Complete** page, review installation information and click the **Close** button.

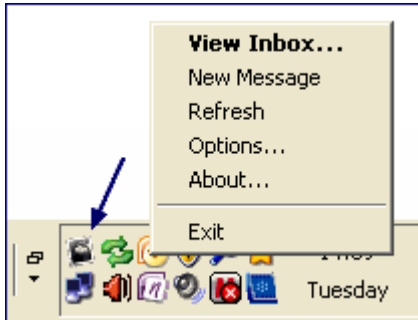


IceWarp Notifier installation is complete now.

Settings

To configure IceWarp Notifier, follow these steps:

1. On the right side of the computer **task bar**, right-click the icon shown below and select the **Options** item:



For more details about the pop-up menu shown above, refer to the **Pop-up Menu** (on page 9) section.

2. On the **General** tab, define your IceWarp Notifier preferences:



Field	Description
Make WebClient the default program for e-mail	Tick the box if you want to set WebClient as the default email client in Windows.

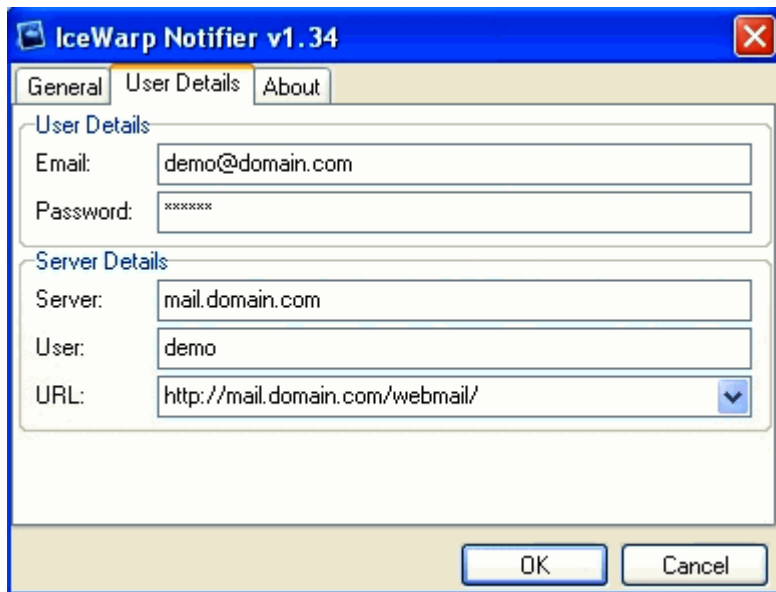
Automatically run when you start your computer	Tick the box if you want the system to launch Notifier automatically after Windows startup.
Notification	Select how/if you want to be notified when a new email message arrives: <ul style="list-style-type: none"> ▪ Show unread messages & play sound ▪ Show unread messages ▪ None
Browser	Select the default browser for WebClient from the list or click the Browse button to use the Browse for file dialog to select your favorite browser.

Other settings are optional.

1. On the **User Details** tab, fill in your **Email** address and **Password** to your email account. Leave the rest blank. Click **OK**.
2. Notifier will now try to automatically configure the server using the SmartDiscover feature, if it has been enabled by the server administrator. If you do not see a notification window with e-mails from your **Inbox**, you need to configure Notifier manually.
3. Reopen the **Settings – User Details** tab.

Into the **URL** field, provide the correct web address where you usually access WebClient.

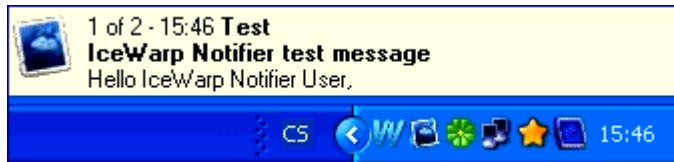
Into the **Server** field, type the server hostname you received from your administrator – usually it is the first (hostname) part between slashes of the WebClient URL – see the picture below.



4. Click **OK** to finish setting up IceWarp Notifier and save the changes.

Notifications

When a new email message arrives, a notification similar to this one is shown:

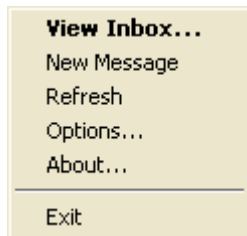


Clicking this notification frame opens a window with the incoming message directly in WebClient.

You can use arrow keys, Home and End keys to browse through e-mails in your Inbox within the notification frame.

Pop-up Menu

To reveal this menu, right-click the Notifier task-bar icon as illustrated in the **Settings** (on page 6) chapter – on the first image with an arrow.



Item	Description
View Inbox	Click the item to open IceWarp WebClient in your browser and view Inbox. NOTE that you have to have set the Auto login option in the Remember field of the WebClient login page unless you want to always log in.
New Message	Click the item to open WebClient with a composer window ready to write a new email message. NOTE that you have to have set the Auto login option in the Remember field of the WebClient login page unless you want to always log in.
Refresh	Click the item if you want to review notifications of all unread email messages.
Options	Refer to the Settings (on page 6) section for detailed description of this option.
About	Click the item to reveal the About tab with information about the currently installed version and copyright notice.
Exit	Click the item to shutdown the Notifier.